



PREPARED BY
DIVISION OF REAL PROPERTY TAX SERVICES
 ERIE COUNTY, NEW YORK
MAP CONVERTED TO GIS FORMAT BY BERGMANN ASSOCIATES (2011)
 ORIGINAL MAP PREPARED BY AERD SERVICE (1981)

NOTES
 THIS MAP WAS PREPARED FOR TAX PURPOSES ONLY
 AND IS NOT TO BE REPRODUCED OR USED FOR
 SURVEYING OR CONVEYANCING.
 MAP PREVIOUSLY CONVERTED TO AUTOCAD DIGITAL FORMAT
 BY ANALYTICAL SURVEYS INC. IN COOPERATION
 WITH WEILER MAPPING INC. (1999)

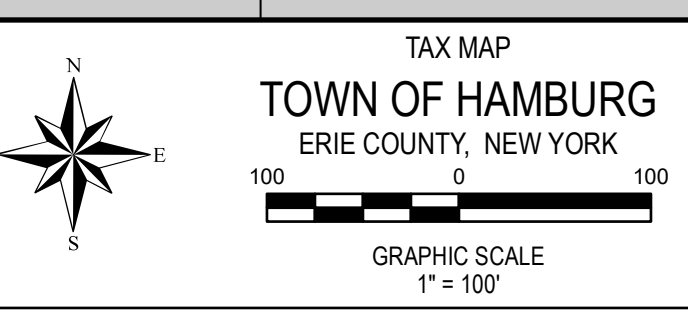
REVISION TABLE		CHANGES OR ADDITIONS
DATE	MADE BY	
4/7/2020	ARG	BLK 2,2 INTO 2.1, 2.2
8/10/2007	MFF	BLK 2-(ADDED LOTS 4-17)(MC3361)
11/1/2004	MFF	BLK 2-(ADDED LOTS 1-3 FROM 183.00)
3/8/2004	MFF	BLK 1-(ADDED LOTS 27-39)(MC3181)
2/7/2002	MFF	BLK 1-(ADDED LOTS 18-26)(MC3091)

SPECIAL DISTRICTS	
SCHOOL	HAMBURG CENTRAL
FIRE	HAMBURG FIRE PROTECTION
SEWER	ERIE COUNTY DISTRICT NO 3
WATER	KNAB-LILYDALE BENZ DISTRICT

LEGEND	
PROPERTY LINE	--- (solid line)
ORIGINAL SUBLOT LINE	- - - (dashed line)
RAILROAD	==== (thick solid line)
STREAM OR DITCH	~~~~ (wavy line)
ROAD OR RAILROAD BNDY	- - - - - (dashed line with dots)
COUNTY LINE	--- (dotted line)
TOWN LINE	--- (dotted line)
VILLAGE LINE	--- (dotted line)
GREAT LOT LINE	--- (dotted line)
SCHOOL DISTRICT LINE	--- (dotted line)
WATER DISTRICT LINE	--- (dotted line)
SEWER DISTRICT LINE	--- (dotted line)
FIRE DISTRICT LINE	--- (dotted line)
DEVELOPER COMMON OWNER	--- (dotted line)
TAX MAP BLOCK NO.	--- (dotted line)
FILED PLAN LOT NO.	--- (dotted line)
GREAT LOT NO.	--- (dotted line)

CALCULATED ACREAGE	
DEED ACREAGE	7.5 A(C)
SCALED DIMENSION (CHECKED)	17.5 A
DEED DIMENSION (CENTER LINE)	743.25(S)
COORDINATE LOCATOR	173.33 Q

SHEET INDEX	
183.16	184.00
183.00	184.00
183.00	184.00



TAX MAP
TOWN OF HAMBURG
 ERIE COUNTY, NEW YORK
 TOWNSHIP 9
 RANGE 7
 MAP DATE: 5/10/2023