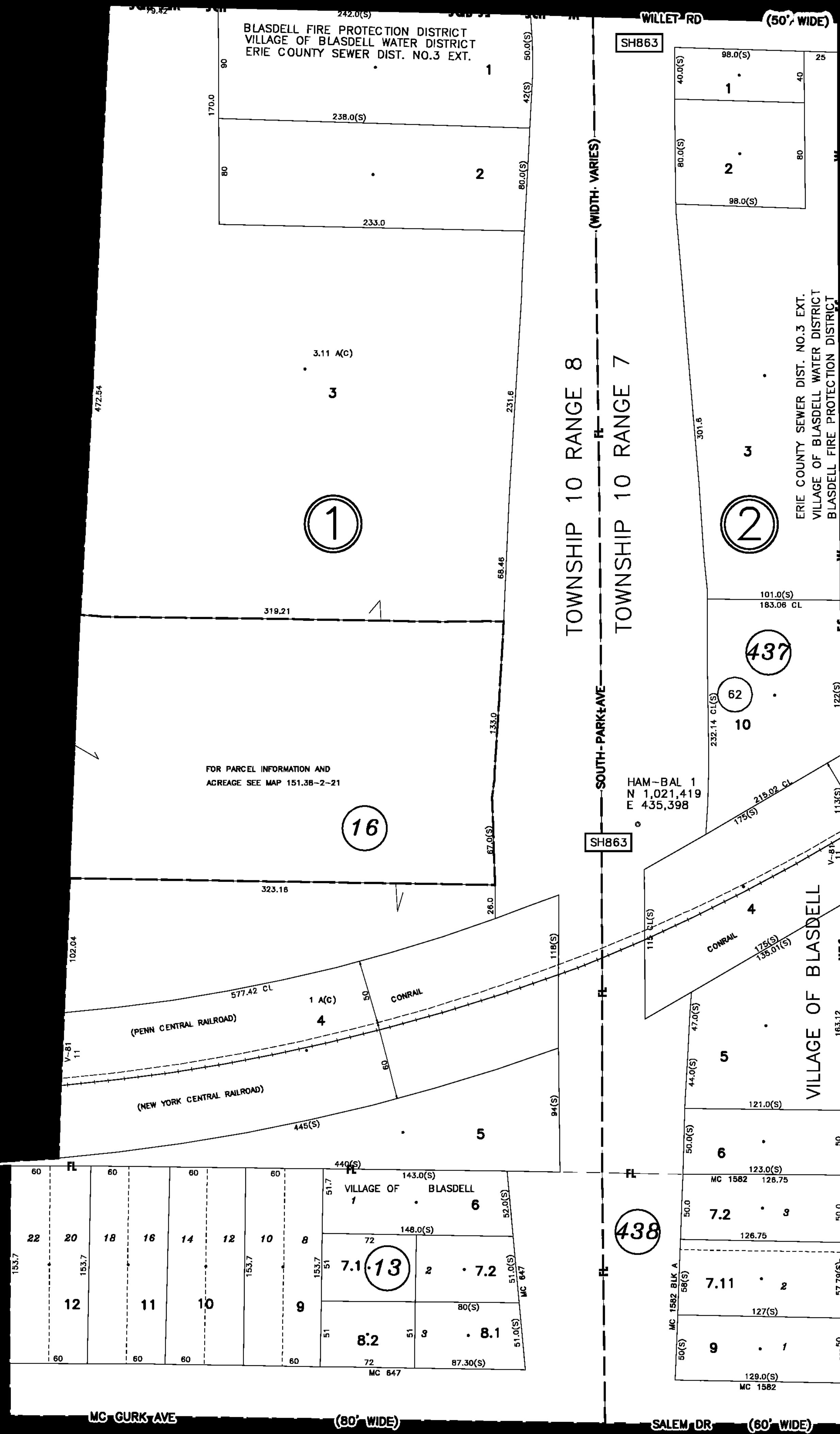


WILLETER RD



McGURK AVE

(80' WIDE)

McGURK AVE

(80' WIDE)

SALEM DR

(60' WIDE)

SALEM DR



PREPARED BY
DIVISION OF REAL PROPERTY TAX SERVICES
ERIE COUNTY, NEW YORK

MAP CONVERTED TO GIS FORMAT BY BERGMANN ASSOCIATES (2011)
ORIGINAL MAP PREPARED BY AERO SERVICE (1981)

NOTES

THIS MAP WAS PREPARED FOR TAX PURPOSES ONLY
AND IS NOT TO BE REPRODUCED OR USED FOR
SURVEYING OR CONVEYANCING.

MAP PREVIOUSLY CONVERTED TO AUTOCAD DIGITAL FORMAT
BY ANALYTICAL SURVEYS INC. IN COOPERATION
WITH WEILER MAPPING INC. (1999)

REVISION TABLE

DATE	MADE BY	CHANGES OR ADDITIONS
1/18/2024	LMO	BLK 1, 7 INTO 7.1 & 7.2
7/25/2020	MFF	BLK 4 (SPLIT 8.1 & 8.2)
8/20/1991	MFF	BLK 2 - (MERGE 7.1, 8 TO 7.11)
10/4/1988	MFF	BLK 2 - (7.1, 7.2)

SPECIAL DISTRICTS

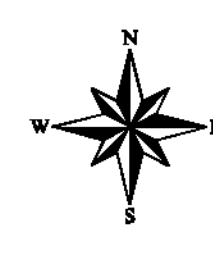
SCHOOL	FRONTIER CENTRAL	DRAINAGE	
FIRE	BLASDELL	SEWER	VILLAGE OF BLASDELL
WATER	VILLAGE OF BLASDELL		

LEGEND

PROPERTY LINE	TOWN LINE	FIRE DISTRICT LINE	DEED ACRES
ORIGINAL SUBLOT LINE	VILLAGE LINE	DENOTES COMMON OWNER	7.5 AC
RAILROAD	BLOCK LIMIT		17.5 A
STREAM OR DITCH	GREAT LOT LINE		225 (S)
ROAD OR RAILROAD BNDY	SCHOOL DISTRICT LINE	TAX MAP BLOCK NO.	743.25(S)
COUNTY LINE	WATER DISTRICT LINE	TAX MAP PARCEL NO.	173.33
	SEWER DISTRICT LINE	FILED PLAN LOT NO.	173.33
		GREAT LOT NO.	173.33

CALCULATED ACRES	7.5 AC
DEED ACRES	17.5 A
SCALED DIMENSION (CHECKED)	743.25(S)
DEED DIMENSION (CENTER LINE)	173.33
COORDINATE LOCATOR	173.33

151.38	151.10
151.47	151.10
151.47	151.10



TAX MAP
VILLAGE OF BLASDELL
ERIE COUNTY, NEW YORK
GRAPHIC SCALE
1" = 50'

151.39

MAP DATE: 3/3/2025