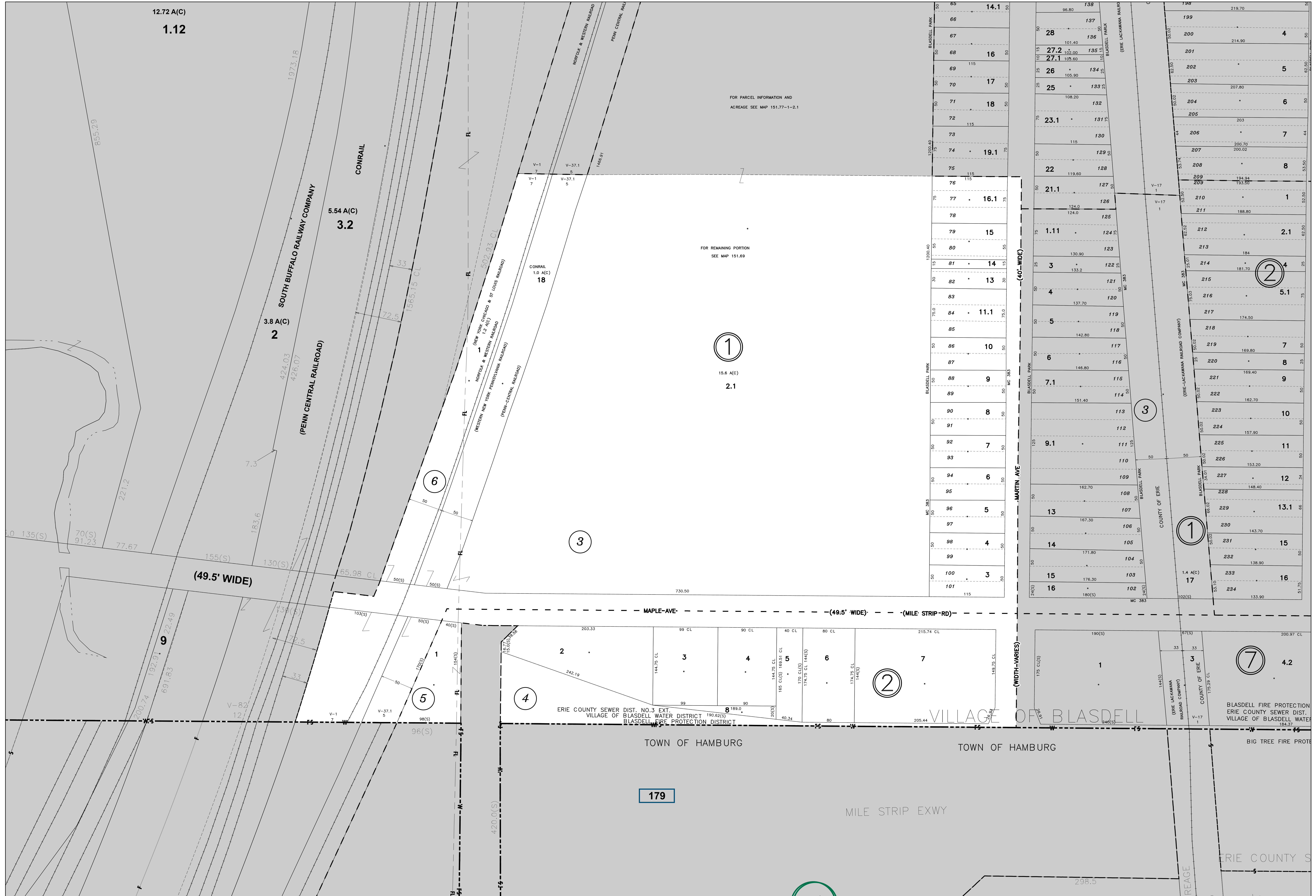


12.72 A(C)

1.12

FOR PARCEL INFORMATION AND ACREAGE SEE MAP 151.77-1-2.1

FOR REMAINING PORTION SEE MAP 151.69



1
15.6 A(C)
2.1

6

3

(49.5' WIDE)

MAPLE-AVE

(49.5' WIDE)

(MILE STRIP RD)

(WIDTH-VARIES)

9

5

4

2

ERIE COUNTY SEWER DIST. NO.3 EXT. VILLAGE OF BLASDELL WATER DISTRICT BLASDELL FIRE PROTECTION DISTRICT

VILLAGE OF BLASDELL

TOWN OF HAMBURG

TOWN OF HAMBURG

179

MILE STRIP EXWY

7

4.2

PREPARED BY
DIVISION OF REAL PROPERTY TAX SERVICES
ERIE COUNTY, NEW YORK

MAP CONVERTED TO GIS FORMAT BY BERGMANN ASSOCIATES (2011)
ORIGINAL MAP PREPARED BY AERD SERVICE (1981)

NOTES

THIS MAP WAS PREPARED FOR TAX PURPOSES ONLY AND IS NOT TO BE REPRODUCED OR USED FOR SURVEYING OR CONVEYANCING.

MAP PREVIOUSLY CONVERTED TO AUTOCAD DIGITAL FORMAT BY ANALYTICAL SURVEYS INC. IN COOPERATION WITH WEILER MAPPING INC. (1999)

REVISION TABLE

DATE	MADE BY	CHANGES OR ADDITIONS
9/23/2016	LMO	BLK 1 (KEY CHANGE) 2 INTO 2.1 & 151.69-2.51
6/16/2004	MFF	BLK 2 (ADDED LOT ASSEMBLY ERROR)
7/27/2000	MFF	BLK 1 (MERGE LOTS 11,12 TO 11.1)
10/29/1980	MFF	BLK 1 - (16.1)

SPECIAL DISTRICTS

SCHOOL	FRONTIER CENTRAL
FIRE	BLASDELL
SEWER	VILLAGE OF BLASDELL
WATER	VILLAGE OF BLASDELL

LEGEND

PROPERTY LINE	--- (Dashed)
ORIGINAL SUBLOT LINE	--- (Dashed)
RAILROAD	--- (Dashed)
STREAM OR DITCH	--- (Dashed)
ROAD OR RAILROAD BNDY	--- (Dashed)
COUNTY LINE	--- (Dashed)
TOWN LINE	--- (Dashed)
VILLAGE LINE	--- (Dashed)
BLOCK LIMIT	--- (Dashed)
GREAT LOT LINE	--- (Dashed)
SCHOOL DISTRICT LINE	--- (Dashed)
WATER DISTRICT LINE	--- (Dashed)
SEWER DISTRICT LINE	--- (Dashed)
FIRE DISTRICT LINE	--- (Dashed)
DENOTES COMMON OWNER	--- (Dashed)
TAX MAP BLOCK NO.	--- (Dashed)
TAX MAP PARCEL NO.	--- (Dashed)
FILED PLAN LOT NO.	--- (Dashed)
GREAT LOT NO.	--- (Dashed)

LEGEND

CALCULATED ACREAGE	7.5 A(C)
DEED ACREAGE	17.5 A
SCALED DIMENSION	225 (S)
SCALED DIMENSION (CHECKED)	743.25(S)
DEED DIMENSION	173.33
DEED DIMENSION (CENTER LINE)	173.33 Q
COORDINATE LOCATOR	•

SHEET INDEX

150.20	151.69	151.69
150.20	151.78	151.78
159.00	151.17	151.17

TAX MAP
VILLAGE OF BLASDELL
ERIE COUNTY, NEW YORK

151.77

GRAPHIC SCALE
1" = 50'

MAP DATE: 5/10/2023