

## SJL Wetlands, LLC

P.O. Box 47  
Warsaw, NY 14569  
716-912-7965

October 10, 2025

25-103

Matthew Gregoire  
D'Amorie Construction LLC  
4684 Dorothy Place  
Blasdell, NY 14219

**Re: Preliminary Wetland Investigation – 3.135± acres  
4091 Jeffrey Boulevard – Lot A  
Town of Hamburg, Erie County, New York**

Dear Mr. Gregoire:

SJL Wetlands, LLC has completed a preliminary wetland investigation at the above referenced site for the purpose of identifying potential regulated wetlands and waterways. The site investigation was conducted on October 9, 2025. SJL Wetlands, LLC did not identify any wetland as defined by the U.S. Army Corps of Engineers (USACE) wetland delineation manuals within the investigation area. The site investigation area is outlined on the attached figure from the Erie County GIS On-Line Parcel Mapper.

The New York State Department of Environmental Conservation (NYSDEC) On-line Resource Mapper (attached) indicates a large area of “Informational Wetland” within the site. However, the site investigation revealed no wetlands meeting Article 24 standards within the investigation area.

Based on this site investigation, it is my professional opinion that the project may proceed without the need for a Section 404 permit from USACE or an Article 24 permit from NYSDEC.

If you have any questions or, please contact me at (716) 912-7965 or email [Scott@SJLWetlandsLLC.com](mailto:Scott@SJLWetlandsLLC.com).

Very truly yours,  
SJL Wetlands, LLC



Scott J. Livingstone  
President

Encl.

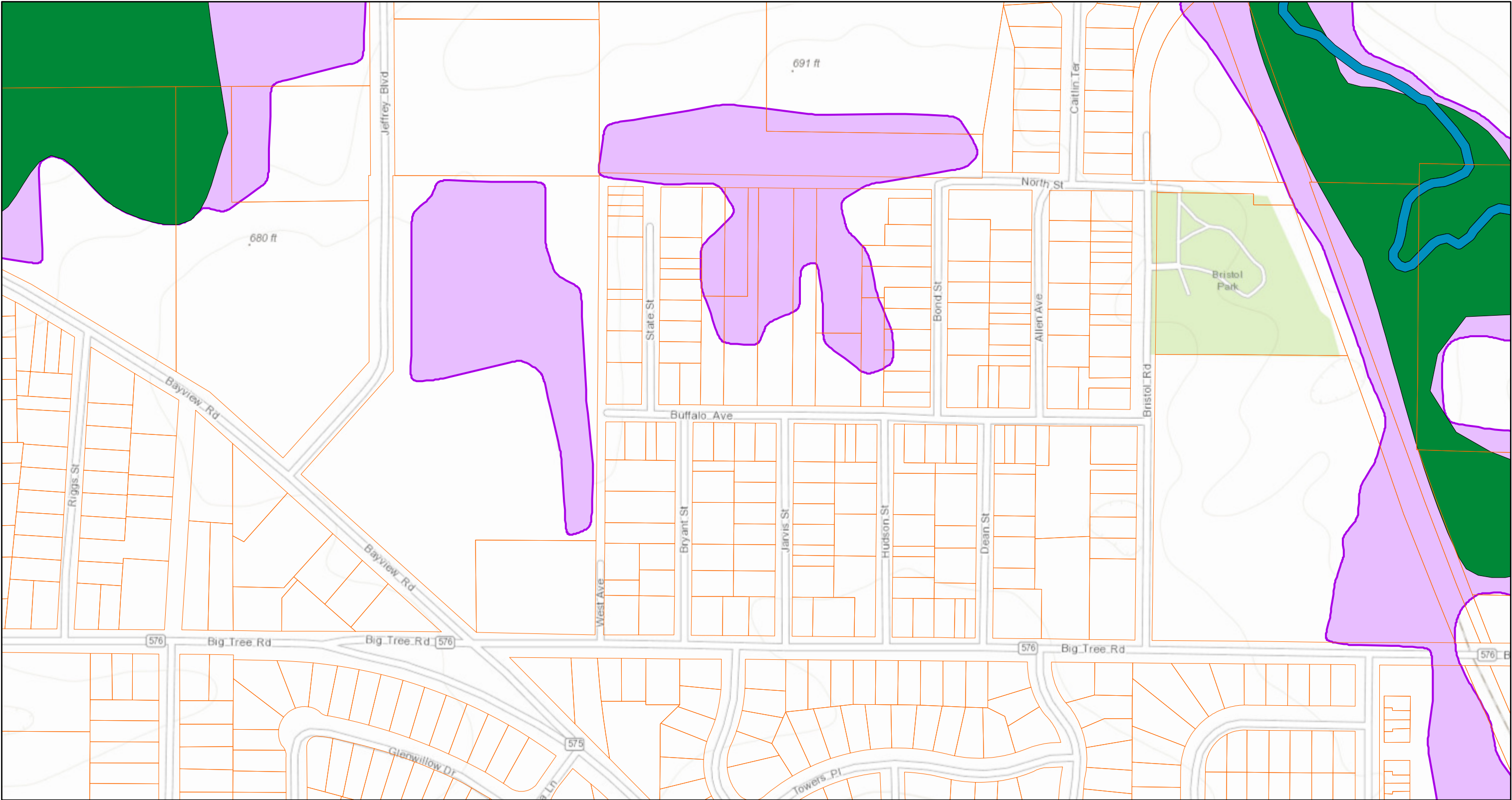


#### Parcels

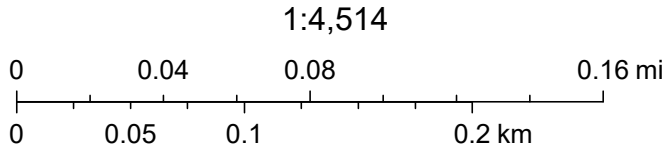


WGS\_1984\_Web\_Mercator\_Auxiliary\_Sphere  
THIS MAP IS NOT TO BE USED FOR NAVIGATION

# Environmental Resource Mapper



October 8, 2025



Province of Ontario, Ontario MNR, Esri Canada, Esri, HERE, Garmin, INCREMENT P, USGS, EPA, USDA, AAFC, NRCan